



## Mouse anti MCV Monoclonal Antibody

Alternative Name(s): nan

### Order Information

- **Description:** MCV (mutated citrullinated vimentin)
- **Catalogue:** 606-040
- **Lot:** See label
- **Size:** 100ug/200ul
- **Host:** Mouse
- **Clone:** ZY514
- **Application:** IHC(P), WB
- **Reactivity:** Hu

### **ANTIGEN PREPARATION**

A synthetic peptide of mutated citrullinated vimentin

### **BACKGROUND**

MCV (mutated citrullinated vimentin) and cyclic citrullinated peptides (CCPs) are potential reliable biomarkers for rheumatoid arthritis (RA). The usefulness of rheumatoid factor (RF) is hampered by low specificity and possible absence in the first year of the disease. Antibodies to cyclic citrullinated peptide (CCP) have high specificity, but low sensitivity for early RA, and CCP is not expressed in the synovial membranes. MCV might be a useful addition to the array of diagnostic tools for RA. Anti-MCV antibodies recognize a protein that originates from apoptotic macrophages and is present in the synovium of patients with RA.

### **PURIFICATION**

The mouse IgG is purified by Protein A-Affinity Chromatography according to Isotyping

### **FORMULATION**

This affinity purified antibody is supplied in sterile Phosphatebuffered saline (pH7.2) containing antibody stabilizer

### **SPECIFICITY**

This antibody recognizes human MCV (mutated citrullinated vimentin) protein. The other species are not tested.

### **STORAGE**

The antibodies are stable for 24 months from date of receipt when stored at -20oC to -70oC. The antibodies can be stored at 2oC-8oC for three month without detectable loss of activity. Avoid repeated freezing-thawing cycles.

### **APPLICATIONS/SUGGESTED WORKING DILUTIONS\***

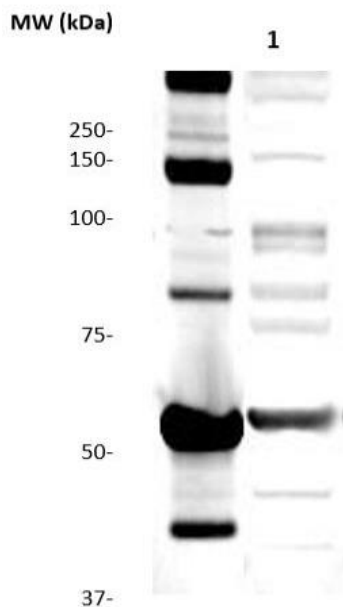
- Western Blot: 0.1-1 µg/ml
- ELISA: 0.01-0.1 µg/ml
- Immunoprecipitation: 2-5 µg/ml
- IHC: 2-10 µg/ml
- Flow cytometry: Not tested
- Molecular Weight: 57.0
- Positive Control: Kidney Tissue
- Cellular Location: Cell Membrane

\*Optimal dilutions should be determined by researchers for the specific applications.

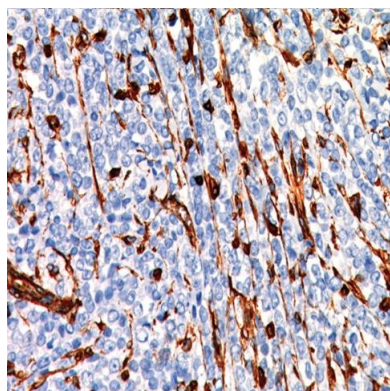
### **FOR RESEARCH USE ONLY.**

AbboMax, Inc 2528 Qume Drive, Suite 8, San Jose, California 95131, USA  
1 408-573-1898 (Tel). 1 408-573-1858 (Fax). [www.abbomax.com](http://www.abbomax.com) [info@abbomax.com](mailto:info@abbomax.com)

## DATA ATTACHMENTS



Western Blot: The whole lysate derived from K562 (20 ug/lane) immunoblotted by Mouse anti-MCV (mutated citrullinated vimentin) (Clone ZY 514) (Cat#606-040) at 1:500. Observed a major immunoreactive band at molecular weight ~57 kDa.



Immunohistochemistry: Human carcinoma (FFPE) stained with Mouse anti-MCV (mutated citrullinated vimentin) (Clone ZY514) (Cat# 606-040) at 1:200 for 10 min @ RT. Staining of formalin-fixed tissue requires boiling tissue sections in 10 mM Citrate Buffer, pH 6.0 for 10 min followed by cooling at RT for 20 min.

## REFERENCES

### FOR RESEARCH USE ONLY.

AbboMax, Inc 2528 Qume Drive, Suite 8, San Jose, California 95131, USA  
1 408-573-1898 (Tel). 1 408-573-1858 (Fax). [www.abbomax.com](http://www.abbomax.com) [info@abbomax.com](mailto:info@abbomax.com)